

Callum Park

A UNIQUE COLLECTION OF
NINE CUSTOMISABLE HOMES

House Type 1

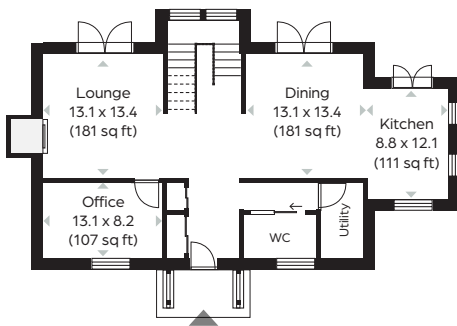


House Type 1

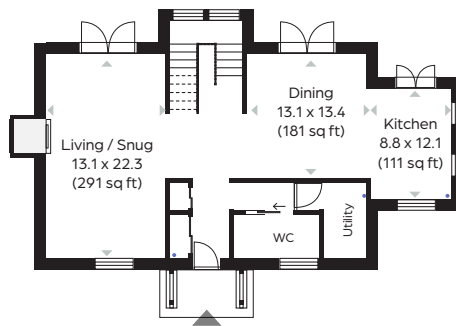
Max House Gross Internal Area	164 m ² / 1,765sq ft
Garage Gross Internal Area	32.63 m ² / 351 sq ft
Bedrooms	Up to 4 bedrooms
Parking spaces	5 + Double garage



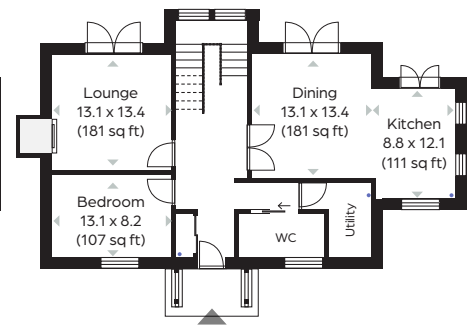
Ground Floor



Option 1

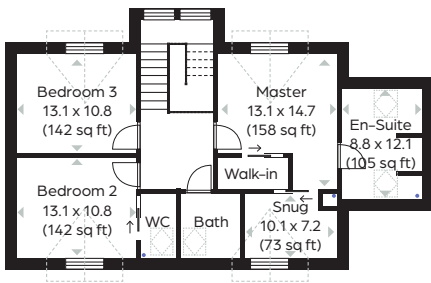


Option 2

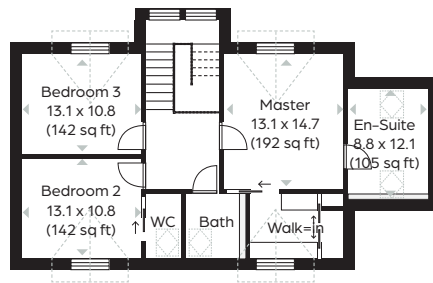


Option 3

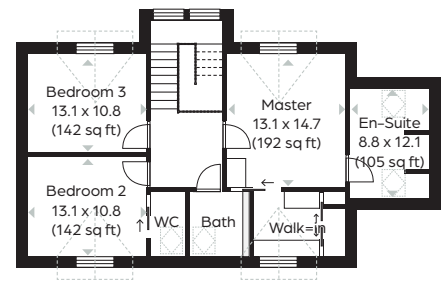
First Floor



Option 1



Option 2



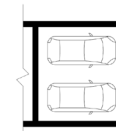
Option 3

Unit of measurement = Feet

Double Garage

Key features

- 'Cottage style designs'
- Double height glazed rooms
- Open plan living spaces



Plots.

House Type 1 is available on the following plots:

Plot 3	643 m ² / 6,921 sq ft
Plot 4	515 m ² / 5,543 sq ft



Next Steps

- Reserve the plot of your choice for £5,000
- Have an initial affordability check with Buildstore (the UK's number 1 provider of Custom and Self Build mortgages)
- Start the process of designing and building your dream home with our appointed architects